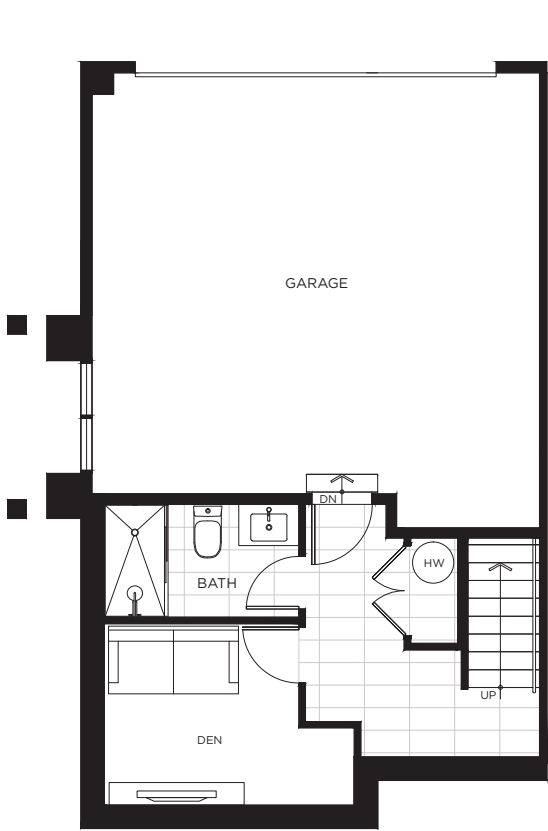


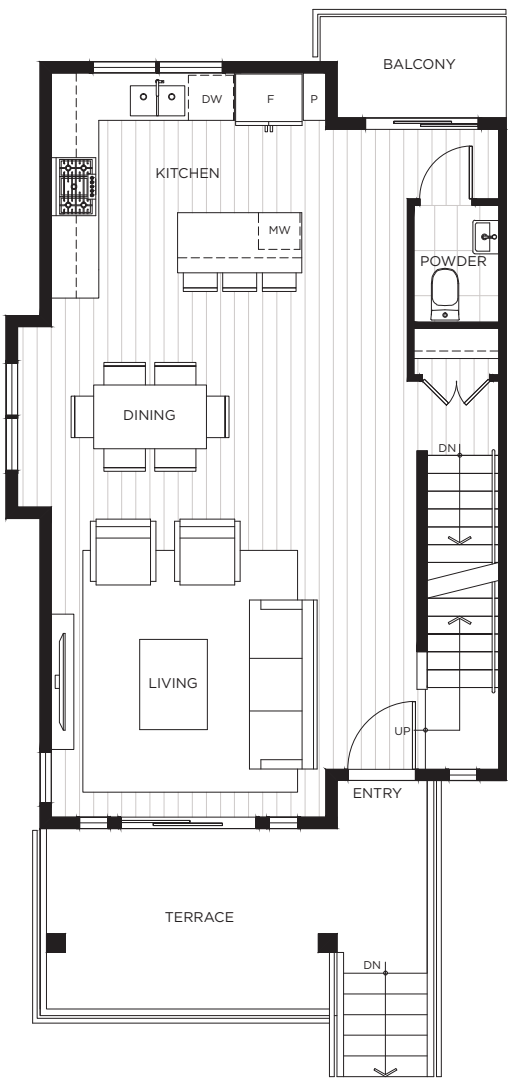
D2

3 BED | 3.5 BATH
INTERIOR 1,607 SQ FT

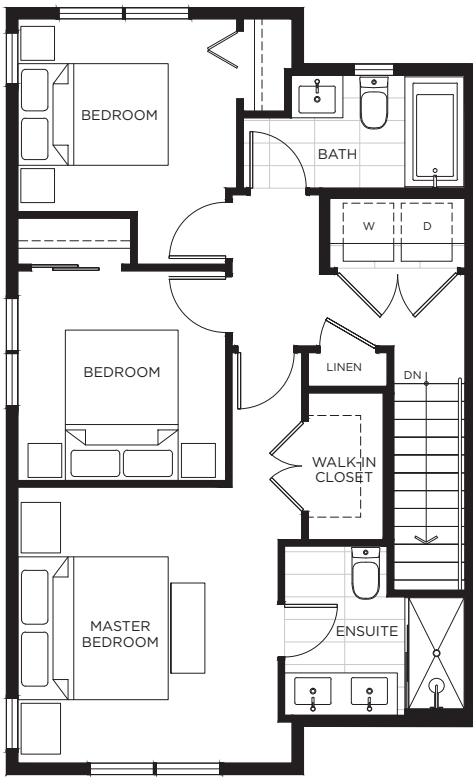
PLAN D2 3 BED | 3.5 BATH



LOWER



MAIN



UPPER

The developer reserves the right to make changes and modifications to the information contained herein. Floorplans and floorplates are subject to change without notice. Please contact a developer sales representative for details. This is not an offering for sale, as an offering can only be made after the filing of a disclosure statement, and only in jurisdictions where qualified in accordance with applicable local laws. E.&O.E.



TOWNHOME